

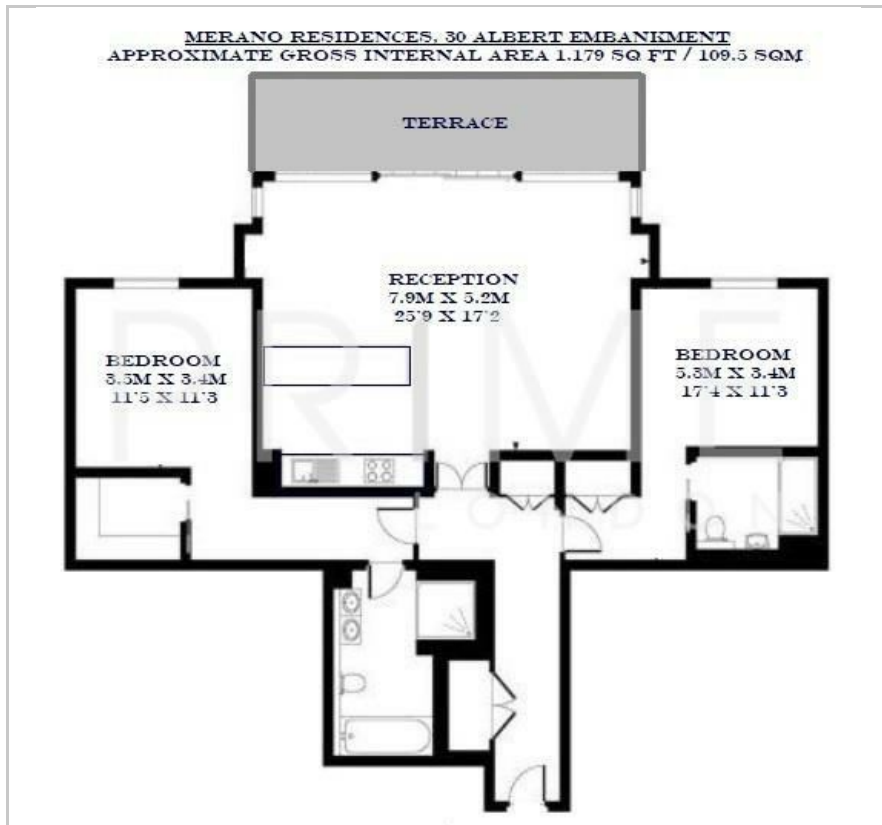
Merano Residences

30 Albert Embankment, SE1 7GS

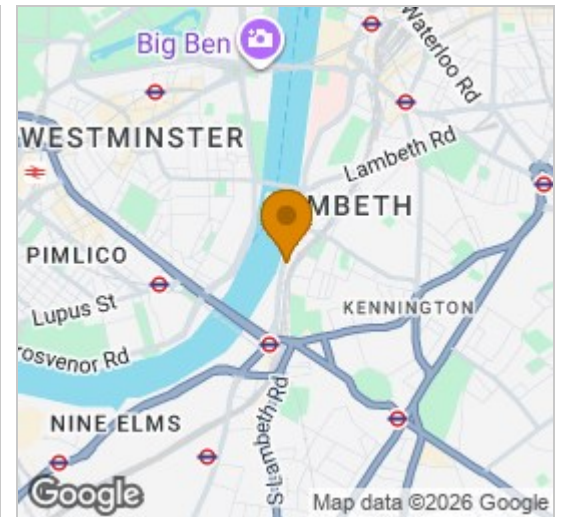
Offers In Excess Of £1,450,000



Floor Plan



Area Map



Energy Efficiency Graph



Viewing

By appointment. Contact us on 0207 928 6663 if you wish to arrange a viewing appointment for this property, or require further information.

- Two bedroom apartment
- Extraordinary views up and down the Thames
- 1,179 sq ft (109.5 sqm)
- Chain free
- Skygarden 140 ft above the river and city
- 24 hour concierge



With extraordinary views up and down the Thames, this stunning apartment totals 1,179 sq ft (109.5 sqm), and is available to purchase chain free through Prime London.

The property comprises a stunning and much larger than average open plan reception room with full floor to ceiling windows, leading to a large private balcony overlooking the River Thames, Houses of Parliament and London Eye, and fully fitted modern kitchen with breakfast bar.

This apartment further comprises two double bedrooms, both of which have river views. Both bedrooms have been designed with living in mind and have deep fitted wardrobes, and the both benefit from having en-suite bathrooms. There is plenty of additional storage throughout the property.

An elegant double-height lobby marks the entrance to Merano, home to an integrated 24 hour concierge and lifestyle management service.

The private Skygarden at Merano sits 140ft above the river and city beneath, a space that enjoys daylong sunlight and affords spectacular views across the heart of London.



These particulars, whilst believed to be accurate are set out as a general outline only for guidance and do not constitute any part of an offer or contract. Intending purchasers should not rely on them as statements of representation of fact, but must satisfy themselves by inspection or otherwise as to their accuracy. No person in this firm's employment has the authority to make or give any representation or warranty in respect of the property.